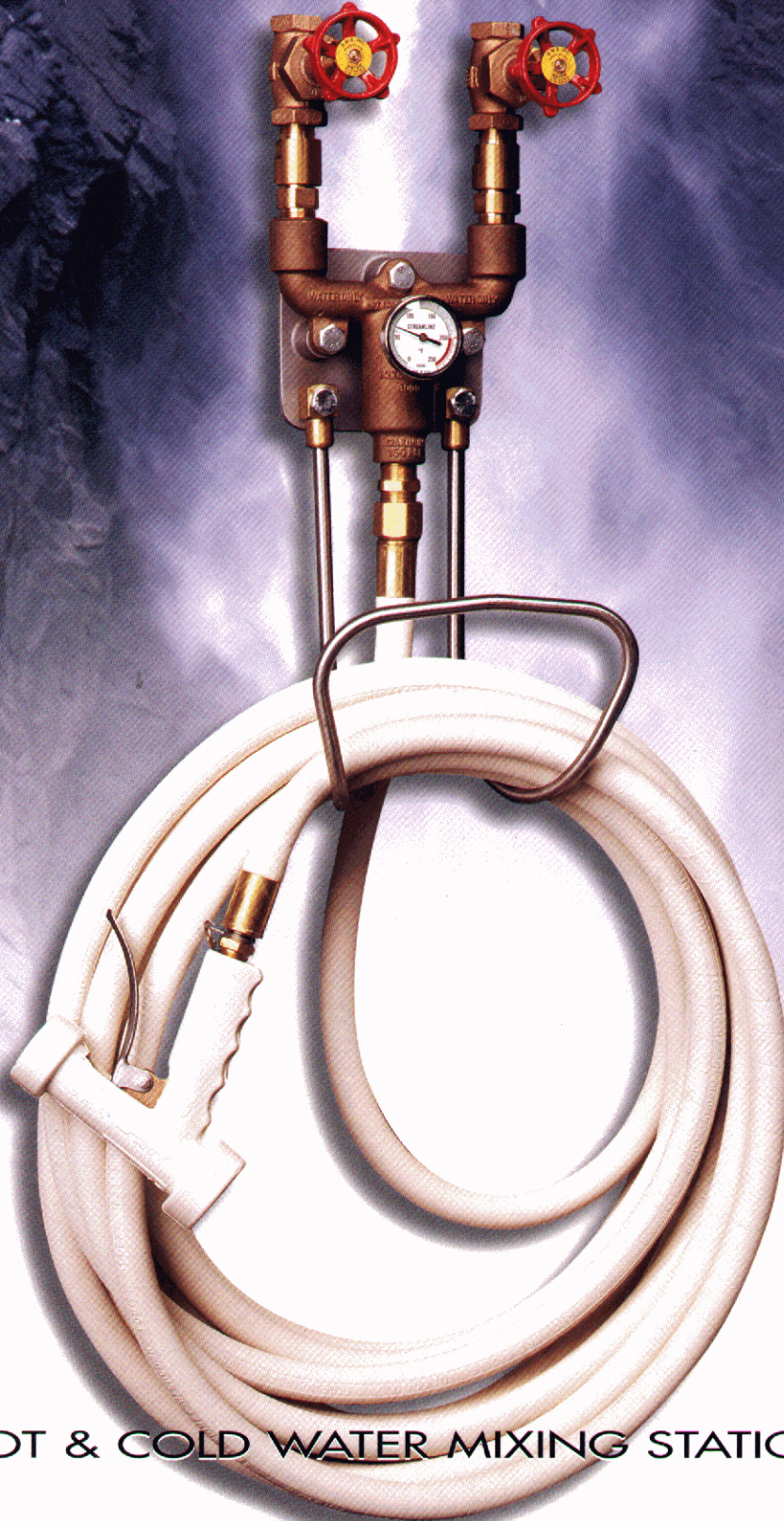


MIXMASTER 3000

STREAMLINE WASHDOWN EQUIPMENT

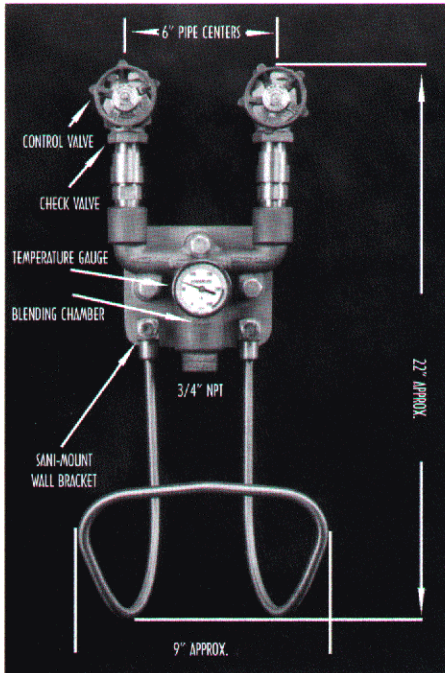


HOT & COLD WATER MIXING STATIONS

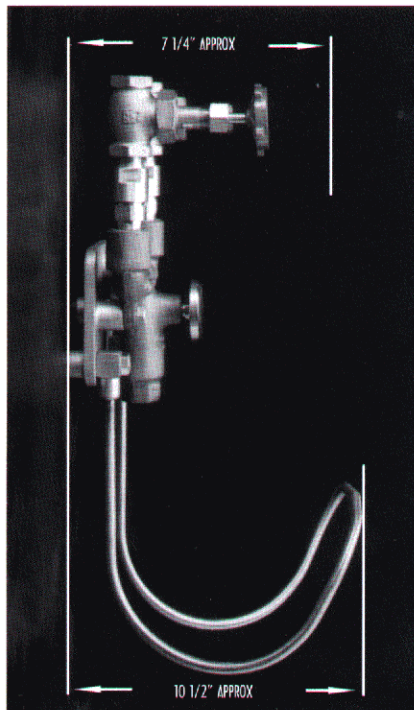


DESIGN & CONSTRUCTION

[DIMENSIONAL DATA]



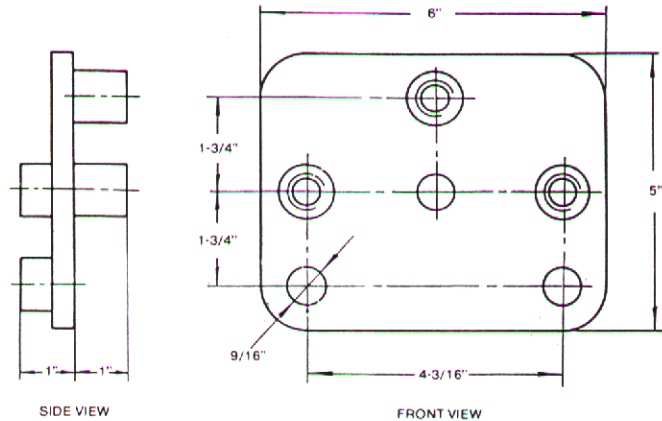
FRONT VIEW



SIDE VIEW

WEIGHT COMPLETE
LESS HOSE & NOZZLE 15 LBS.

[SPECIFICATIONS]



NEW "SANI-MOUNT" WALL BRACKET

THIS NEW MOUNTING BRACKET IS STANDARD EQUIPMENT ON THE MIXMASTER 3000. IT SPACES THE MIXING UNIT AWAY FROM THE WALL TO COMPLY WITH HEALTH & SANITARY REGULATION

MATERIALS OF CONSTRUCTION

MIXER BODY	BRONZE
CONTROL VALVES	BRONZE/STAINLESS
CHECK VALVES	BRONZE/STAINLESS
HOSE RACK	STAINLESS
TEMP. GAUGE	STAINLESS

FLOW CHARACTERISTICS

WITH A 5/8" HOSE BARB FITTING AND 50' OF 5/8" HOSE

CONDITIONS

NOZZLE REMOVED FROM HOSE END
COLD WATER TEMPERATURE 68° F
HOT WATER TEMPERATURE 200° F
COLD WATER PRESSURE FIXED AT 75 PSIG
HOT WATER PRESSURE IS VARIED AS INDICATED BELOW

DATA:	TOTAL FLOW RATE (GPM)			
	Constant Outlet Temperature			
Hot Water	(@ 200° F)	(@ 140° F)	(@ 180° F)	(@ 68° F)
(PSIG)				
25	14.74	21.25	16.81	27.45
40	19.50	23.18	20.74	27.45
50	21.92	24.30	22.73	27.45
60	24.05	25.37	24.50	27.45
75	27.45	27.45	27.45	27.45
90	30.24	28.92	29.86	27.45
100	32.09	30.03	31.48	27.45
125	36.20	32.49	35.10	27.45
150	39.95	34.91	38.42	27.45

NOTE: Above flow rates are the maximum allowable flow rates under given conditions. Flow rates will be reduced when nozzle is attached to end of hose. Consult factory for flow rates on the S-150 Series Spray Nozzles.

MAXIMUM PRESSURE	150 PSI
MAXIMUM TEMPERATURE	200° F

NOT FOR USE ON STEAM

STREAMLINE WASHDOWN EQUIPMENT

5235 Avenida Encinas • Carlsbad, Ca 92008 • Toll Free (800) 926-3648 • Fax (760) 431-7081