

ClearGard® Flow Indicators



INDUSTRY COMPLIANCES:

- ACCEPTED BY USDA DAIRY, EGG, MEAT AND POULTRY, CANADIAN FOOD INSPECTION AGENCY (CFIA)
- COMPLIES WITH 3-A STANDARD 65-00
- REVIEWED BY MILK SAFETY BRANCH IN COMPLIANCE WITH GRADE "A" PASTEURIZED MILK ORDINANCE/FDA

Applications

- For monitoring product levels and movement in rigid piping systems

Features and Benefits

- **Ultra-pure**
 - Chemfluor® FEP tubing material resistant to virtually all known chemicals
 - Helps maintain your ultra-pure environment
- **Non-stick surface**
 - Up to six times smoother than standard PFA tubing
 - Greatly reduces potential for cross-contamination
- **Superior visual clarity**
 - Allows accurate monitoring of product levels and movement in rigid piping systems
 - Will not discolor, resists ultraviolet light
- **Radial crimp design**
 - Utilizes PermaSeal® radial crimp fittings
 - Excellent durability, increased pressure ratings
 - Provides a full flow smooth bore inside diameter

Superior mechanical properties – maintains structural integrity at elevated temperatures and pressures, non-aging

Excellent chemical resistance – maintains fluid integrity, universally suitable for most caustic applications

Non-stick surface – less cross-contamination, higher process productivity

High grade 316L material – excellent durability, high chemical resistance

Pin stamped part and heat numbers – provides total traceability, customizing available

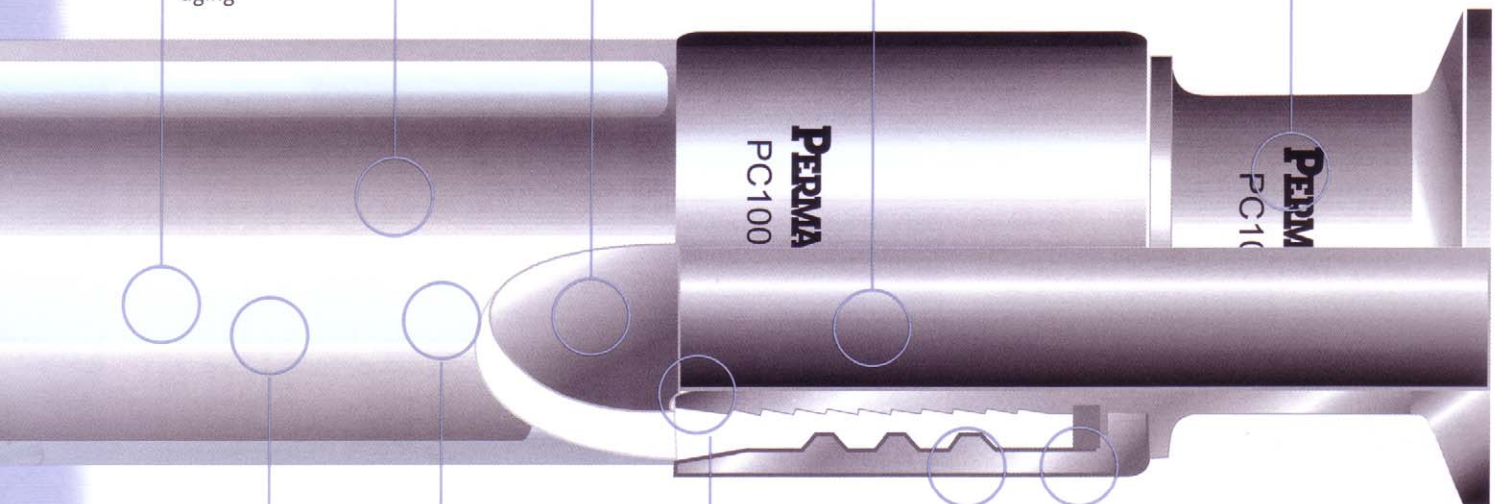
Shatter-proof design – protects workers, environmentally safe

Superior clarity – will not discolor, unaffected by ultraviolet light

Full flow smooth bore design – no internal entrapment areas to harbor bacteria

Deep barb serrations – excellent retention, resists fitting blow-off at elevated temperatures

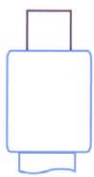
Radially crimped – 360° compression seal, eliminates ingress of product



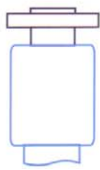
Flow Indicator Details

- ClearGard® flow indicators are available in sizes 1/2" up to 3" (lengths up to 10 feet) in six standard end styles
- Stems are manufactured from grade 316L stainless steel with an interior surface finish exceeding 15Ra or better
- Non-metallic stems in a number of polymers are available for metal-sensitive applications
- Can also be ordered as a homogenous unit, thus making it the smoothest internal bore flow indicator available; there are size and length limitations, however, so contact factory for availability

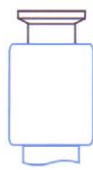
End Connector Styles



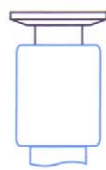
TE
Tube End



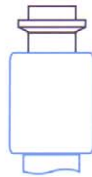
AF
Flange End



TC
Sanitary
Clamp



TC
Step Up



EM
Male
I-Line



EF
Female
I-Line

Flow Indicator Specifications

SPECIFICATIONS						
Part Number	Size (in.)	Inside Diameter (in.)	Outside Diameter (in.)	Wall Thickness	Pressure (PSI) (p.s.i.) @ 70°F	Burst Pressure 70°F
CFI050	1/2	0.500	0.700	0.100	200	800
CFI075	3/4	0.750	0.950	0.100	175	700
CFI100	1	1.000	1.250	0.125	125	500
CFI150	1-1/2	1.356	1.610	0.125	105	420
CFI200	2	1.856	2.100	0.125	72	290
CFI250	2-1/2	2.356	2.650	0.150	50	200
CFI300	3	2.856	3.230	0.185	40	160
CFI400	4	3.856	4.276	0.210	30	120

*Burst pressure ratings at ambient 70°F (21°C).
For applications over 300°F consult factory.

PRESSURE CORRECTION FACTORS FOR ALL NON CAGED FLOW INDICATORS

Using operating pressure @ ambient with correction factors for elevated temperatures.

70°F	150°F	200°F	250°F	300°F
100%	65%	50%	35%	25%

Example: 1" Flow indicator @ 200°F rated @ 125 P.S.I. ambient x .50 = 62.5 P.S.I. @ 200°F